



JOURNEY DIAGRAM - PSYCHOLOGY - KS4

Year
10

Autumn 1

Autumn 2

Spring 1

Spring 2

Summer 1

Summer 2

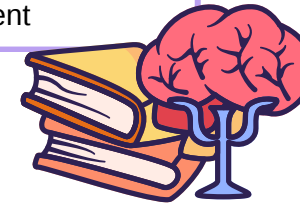
- Research Methods
- Memory

- Memory continued



- Perception

- Perception continued
- Development



- Development continued

- Paper 1: Cognition and Behaviour revision

Year
11

Summer 2

Summer 1

Spring 2

Spring 1

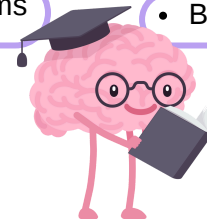
Autumn 2

Autumn 1

- Revision for Paper 1 and Paper 2: Social Context and Behaviour
- Final GCSE Summer exams take place at the start of exam season in May. Specific dates can be found on the AQA website.



- Psychological problems



- Brain and Neuropsychology

- Language, thought and communication



- Social Influence