



St John
Bosco
College

JOURNEY DIAGRAM - PSYCHOLOGY - SIXTH FORM

Year
12

Year
13

Autumn 1

Autumn 2

Spring 1

Spring 2

Summer 1

Summer 2

- Social Influence
- Introduction to Research Methods

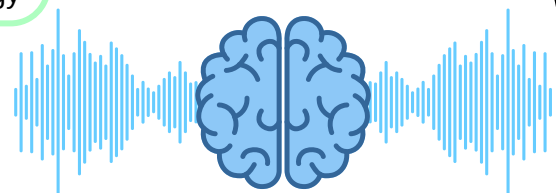
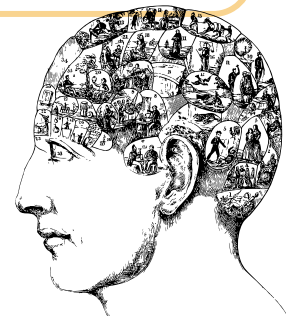
- Research Methods

- Memory

- Attachment

- Clinical psychology and mental health (formerly known as 'Psychopathology')
- Approaches in Psychology

- Approaches in Psychology continued
- Year 12 content revision



Summer 2

Summer 1

Spring 2

Spring 1

Autumn 2

Autumn 1

- **Paper 1-3** revision
- Final A-level Summer exams take place in May and June. Specific dates can be found on the AQA website.
- **Paper 1** – Introductory topics in Psychology
- **Paper 2** – Psychology in context
- **Paper 3** – Issues and options in Psychology



- Relationships continued
- Aggression

- Issues and Debates
- Relationships

- Schizophrenia

- Biopsychology
- Research Methods – Yr 13 content only