



Charging and Remission Policy

Reviewed without change: October 2021

Next review: October 2022

The governing board of St John Bosco College adopted this policy on October 2021.

Under the charging provisions of the Education Act 1996, governing boards of maintained schools and academies must draw up a statement of their charging and remissions policy before they may charge for certain defined activities. The policy must also be available online. St John Bosco College's policy below can also be found on the school's website.

Education legislation demands that schools, subject to certain exceptions, may not charge for education provided during school hours. However, schools are permitted to charge for other items and experiences provided to the pupils. Schools may also invite voluntary contributions to help support these provisions. Schools have a duty to inform parents on low incomes and in receipt of certain benefits that support is available towards certain costs when they are being asked to make contributions e.g. towards school visits.

Objectives and targets

The governing board of St John Bosco College has set up this policy for certain activities which take place in the school. The purpose of this policy is to clarify which items and experiences that the school provides may have a levy charged upon them, how much of the cost the school expects parents to be charged and who will be offered support to pay for items and experiences for their children. This charging and remission policy is implemented within the letter of the law, and also embracing the spirit of it. It will be no less generous than the local authority's (LA's) policy.

Action plan

Where visits are arranged either as an integral part of a particular syllabus or to enhance pupils' learning experience, parents may be asked to contribute towards the cost. However, legislation states that a pupil should not be debarred from a visit if a parent does not wish to contribute. In cases of family hardship, parents may apply, in confidence, to the headteacher for exemption from such contributions. However, we hope that parents will realise that there comes a point when a trip is not viable if sufficient contributions are not forthcoming.

There may be occasions when an organisation other than the LA or the school governing board arranges an activity during school hours, and parents want their children to take part. Such organisations may charge parents for the services provided, so any parents who do not wish to pay so that their child can attend must seek permission for their child's absence.

We believe that a school should give pupils as many varied learning experiences as possible and we shall do our utmost to ensure that all our pupils have the opportunity to benefit from such experiences. Parents who are in receipt of the following benefits are exempt from paying charges.

- Universal credit in prescribed circumstances (the government plans to prescribe these circumstances when universal credit is fully rolled out).
- Income support.
- Income-based jobseekers allowance (IBJSA).
- Support under part VI of the Immigration and Asylum Act 1999.
- Child tax credit, provided that working tax credit is not also received and the family's income as assessed by HMRC does not exceed certain limits.
- Working tax credit run-on – paid for four weeks after you stop qualifying for working tax credit.
- The guarantee element of state pension credit.
- An income-related employment and support allowance.

For activities such as music tuition, field trips, concert and theatre visits, the table below indicates the school's policy on which activities will be charged for.

Activity	Comment
Individual instrumental music tuition that is over and above the national curriculum, and/or an approved examination syllabus.	A charge will be made per lesson. This will be reviewed when the charges made to the school by the music instructors. Any examination fees are paid by parents.
Transport to work experience	Parents will pay directly (except statemented pupils where the statement refers to transport).
Activities outside school time not related to statutory duties.	Charges will be levied. Including a £1 administration fee for activities over £10 and 50p for activities under £5.

Board and lodging on residential visits.	Parents are to be charged, except in cases of statutory remission where families receive benefits.
Rescrutiny of exam results.	Parents to pay all charges.
Exam entry for prescribed exam for which pupils have not been prepared by school.	Parents to pay all charges.
Entry for an exam which is not on prescribed list where preparation takes place outside school hours.	A charge will be made.
Recovery of wasted exam fees.	Parents to be charged.
Educational visits and field trips.	Parents will be asked for a voluntary contribution.

Monitoring and evaluation

This policy will be monitored and evaluated in the light of changes to legislation and comments received from parents and other interested parties.

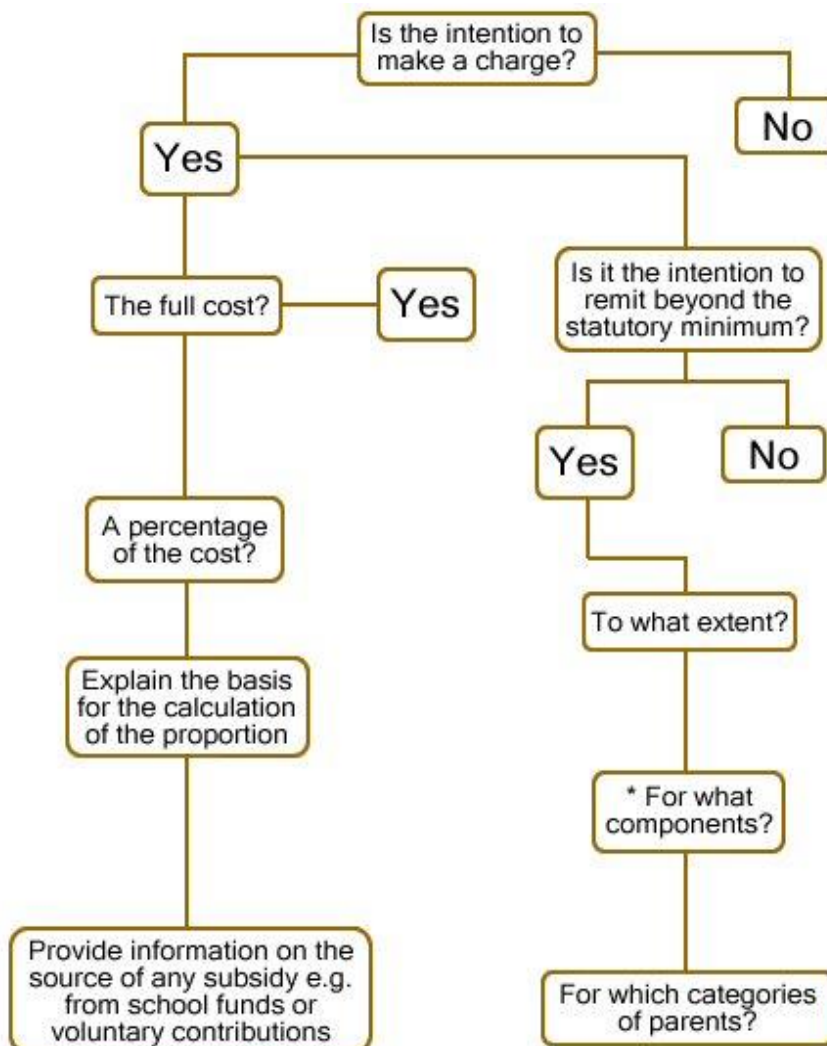
Reviewing

This policy will be reviewed by a committee of the governing board annually.

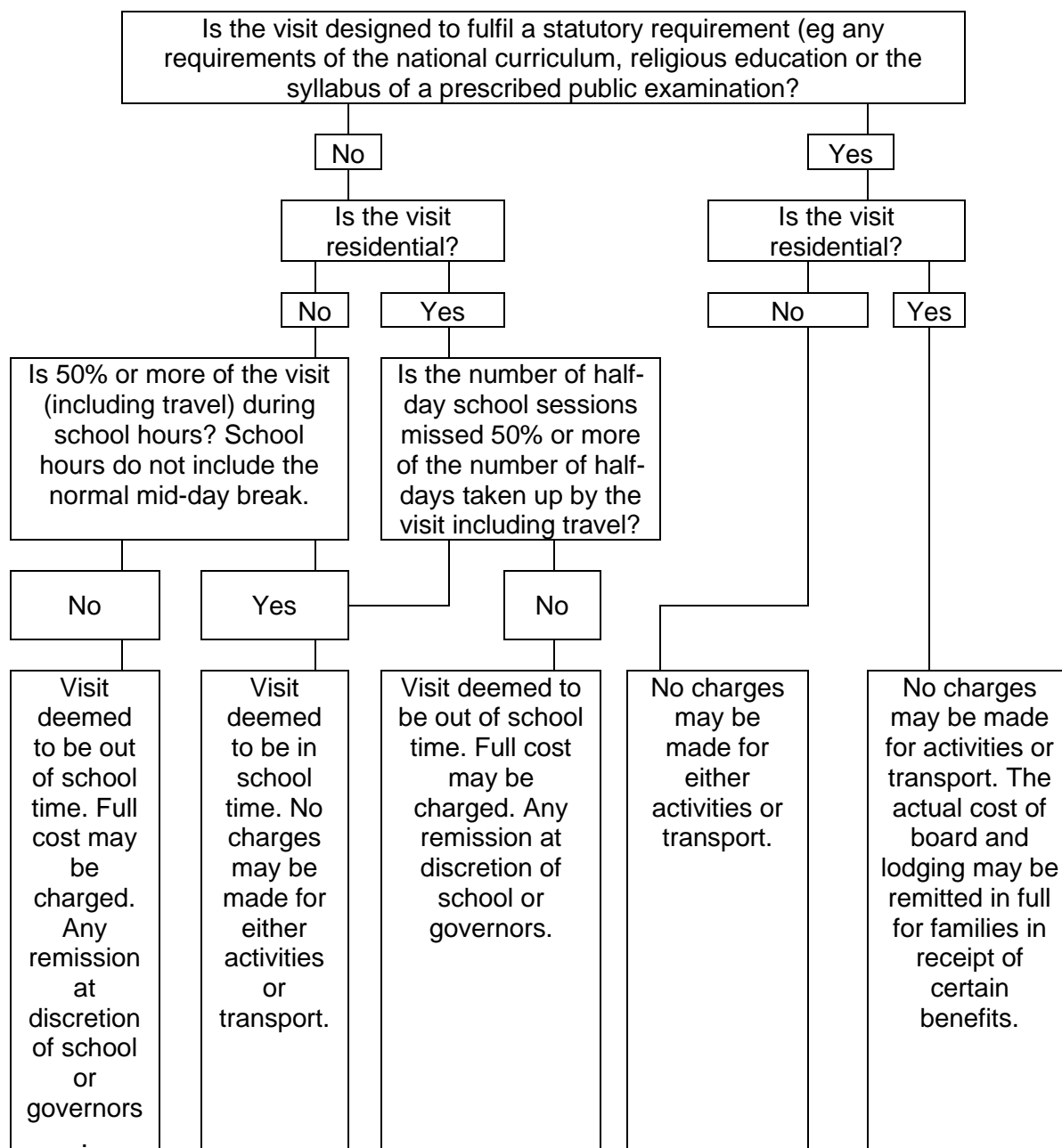
Next school review due: Autumn 2022

APPENDIX 1 – DRAWING UP A CHARGING POLICY

The flow chart below can be used by governing boards to draw up their charging policy for items and experiences upon which a charge may be levied. For each of the chargeable items, the governing board will need to determine its policy on the following basis:



APPENDIX 2 - WHETHER TO MAKE A CHARGE FOR SCHOOL VISITS



Voluntary contributions may be requested from parents in any of the above circumstances, but no pupil may be treated differently according to whether or how much their parents have contributed.